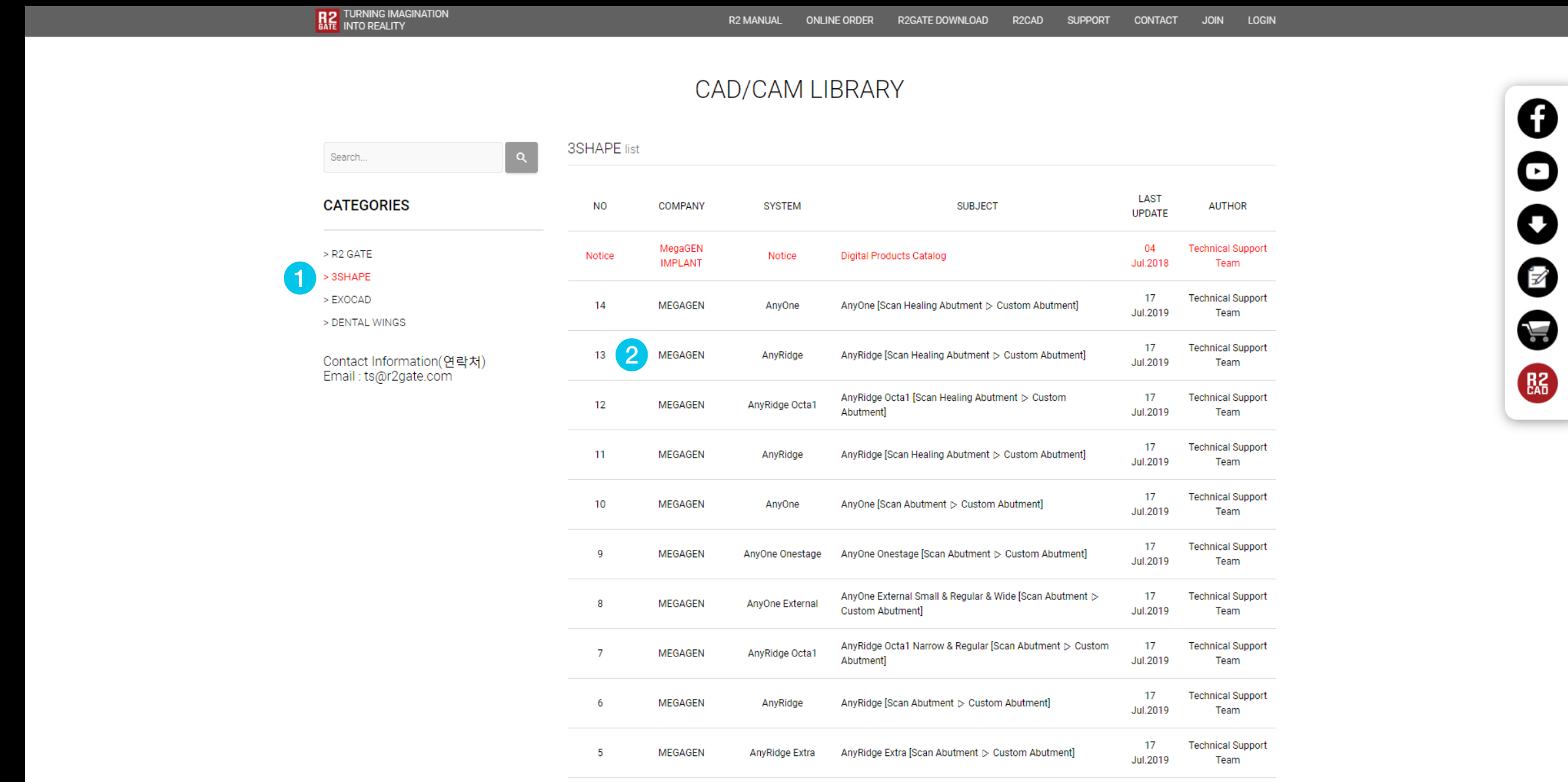
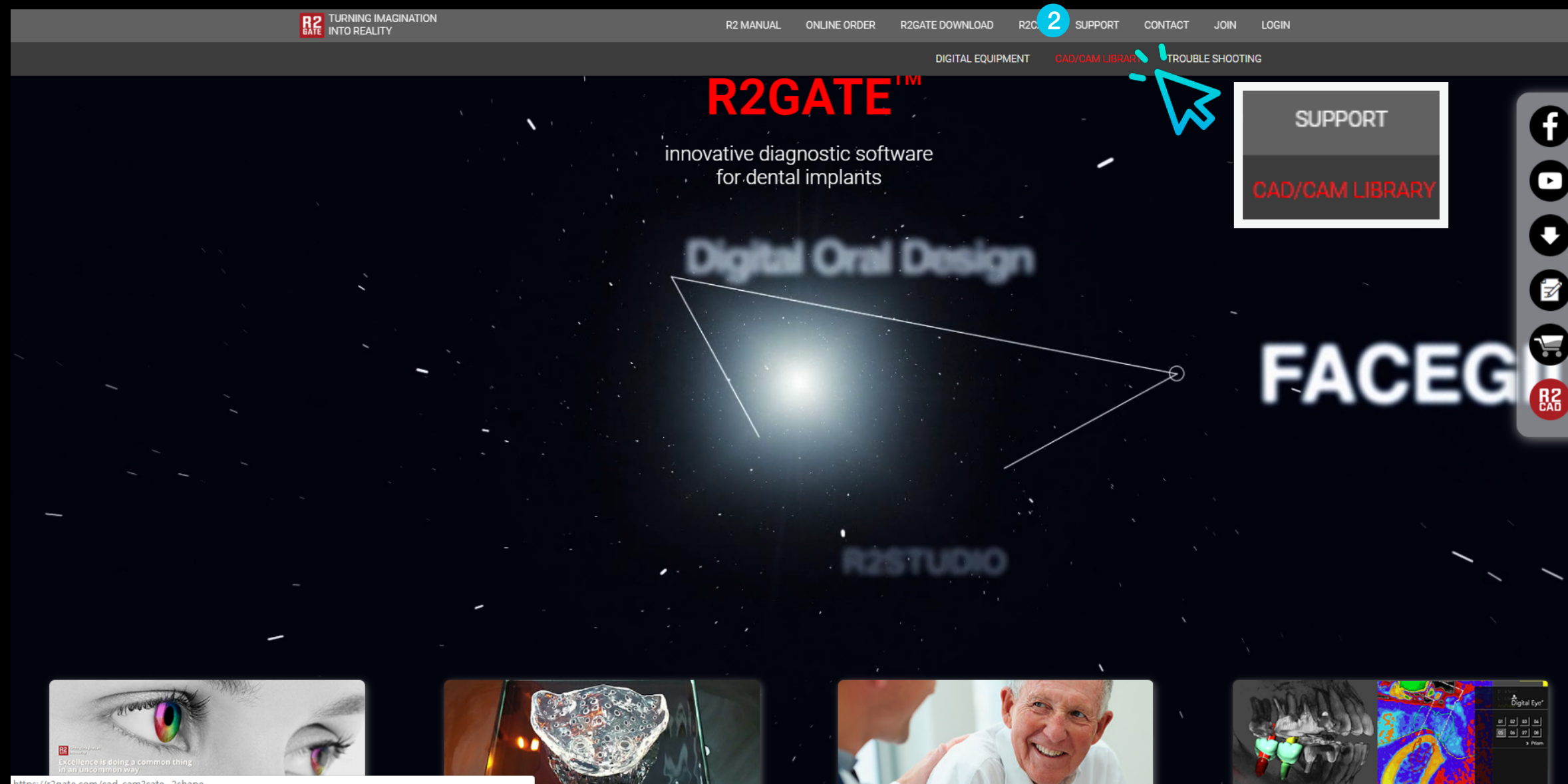


3shape

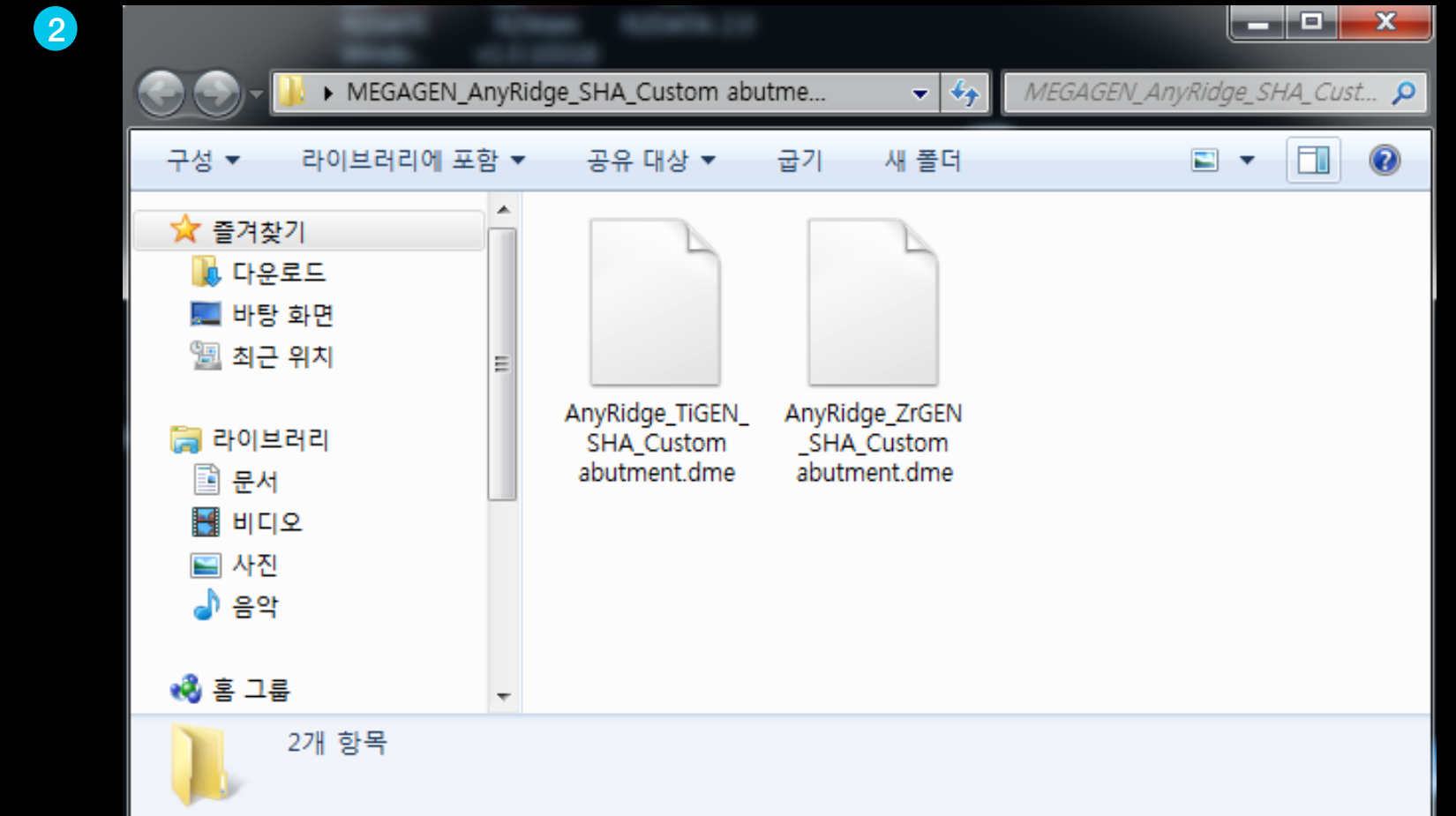
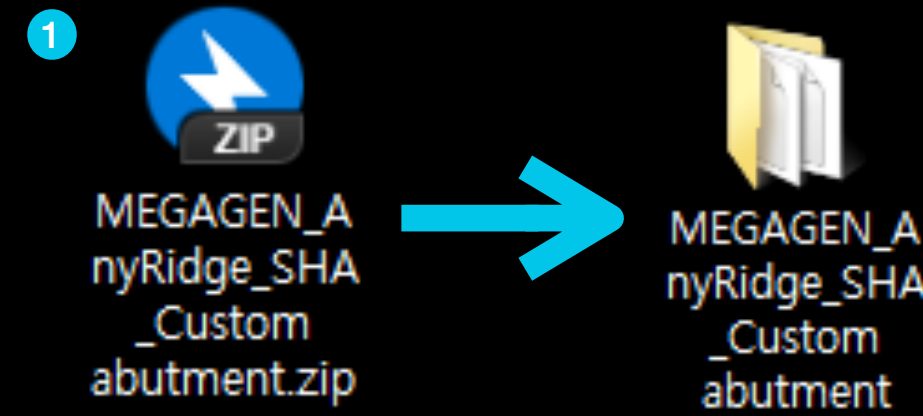
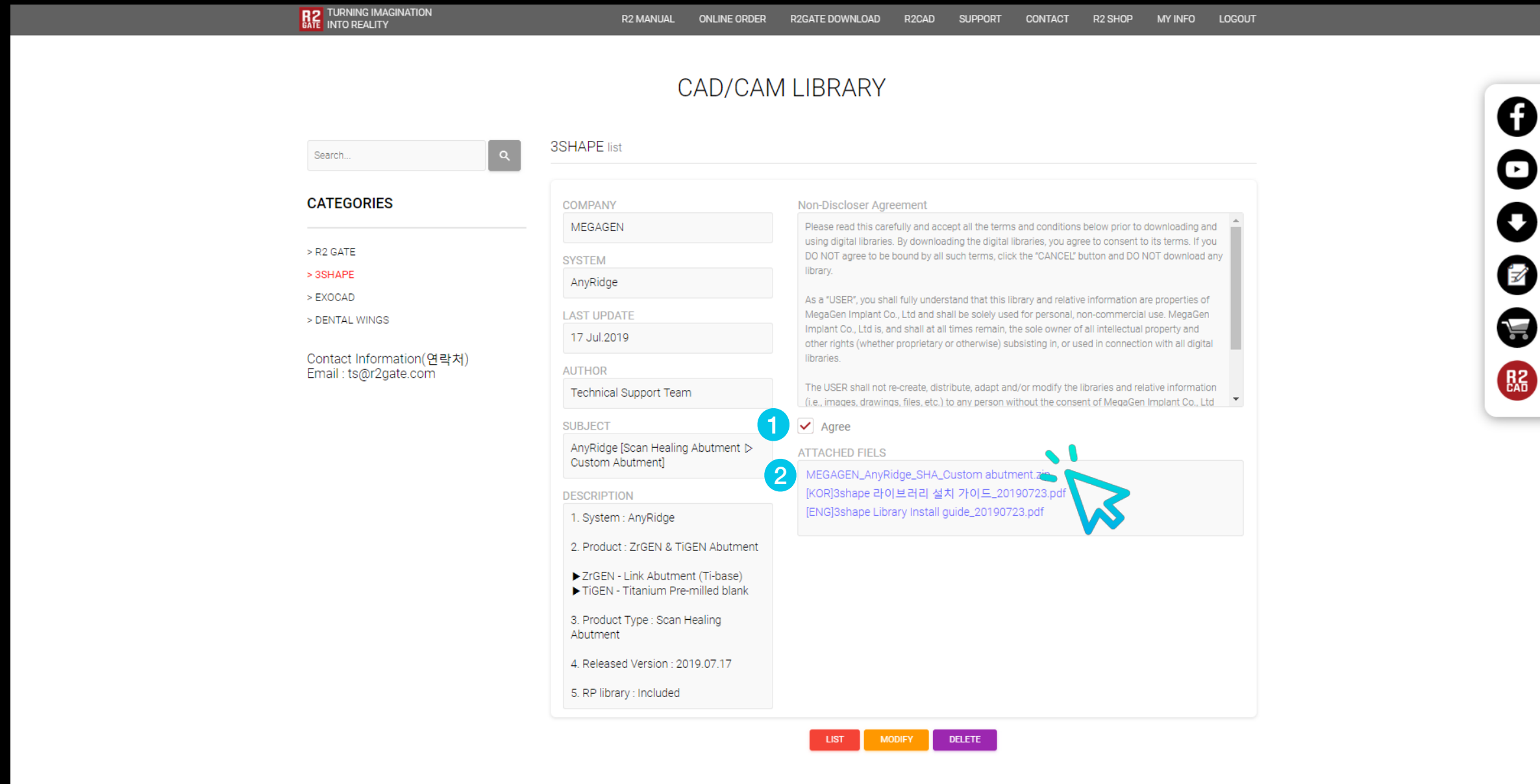
Implant & RP analogue Library

Install guide



- 1 Go to www.r2gate.com website.
- 2 Select SUPPORT -> CAD / CAM library from the top menu.

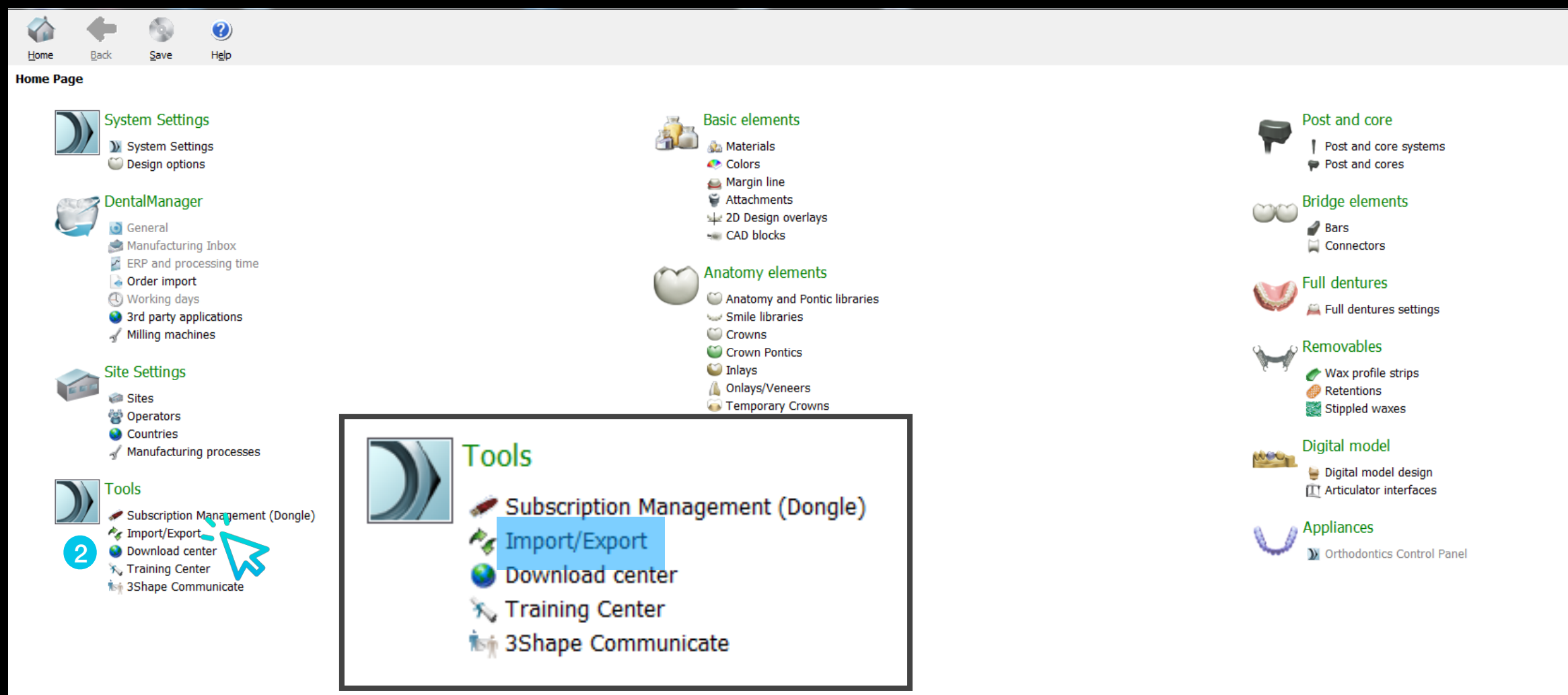
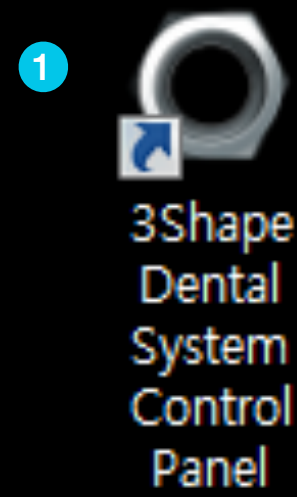
- 1 Select the CAD software on the left.
 - 2 On the right side, select the required implant system.
- * Scan abutment > Custom abutment means you can design custom abutment by matching scan abutment.
 - * SHA > EZ Post means that you can design EZ Post by matching scan healing abutment.



- 1 Read the letter and check your consent if you agree.
- 2 Click the implant library to download the library.
(If you do not agree, the download will not be enabled.)

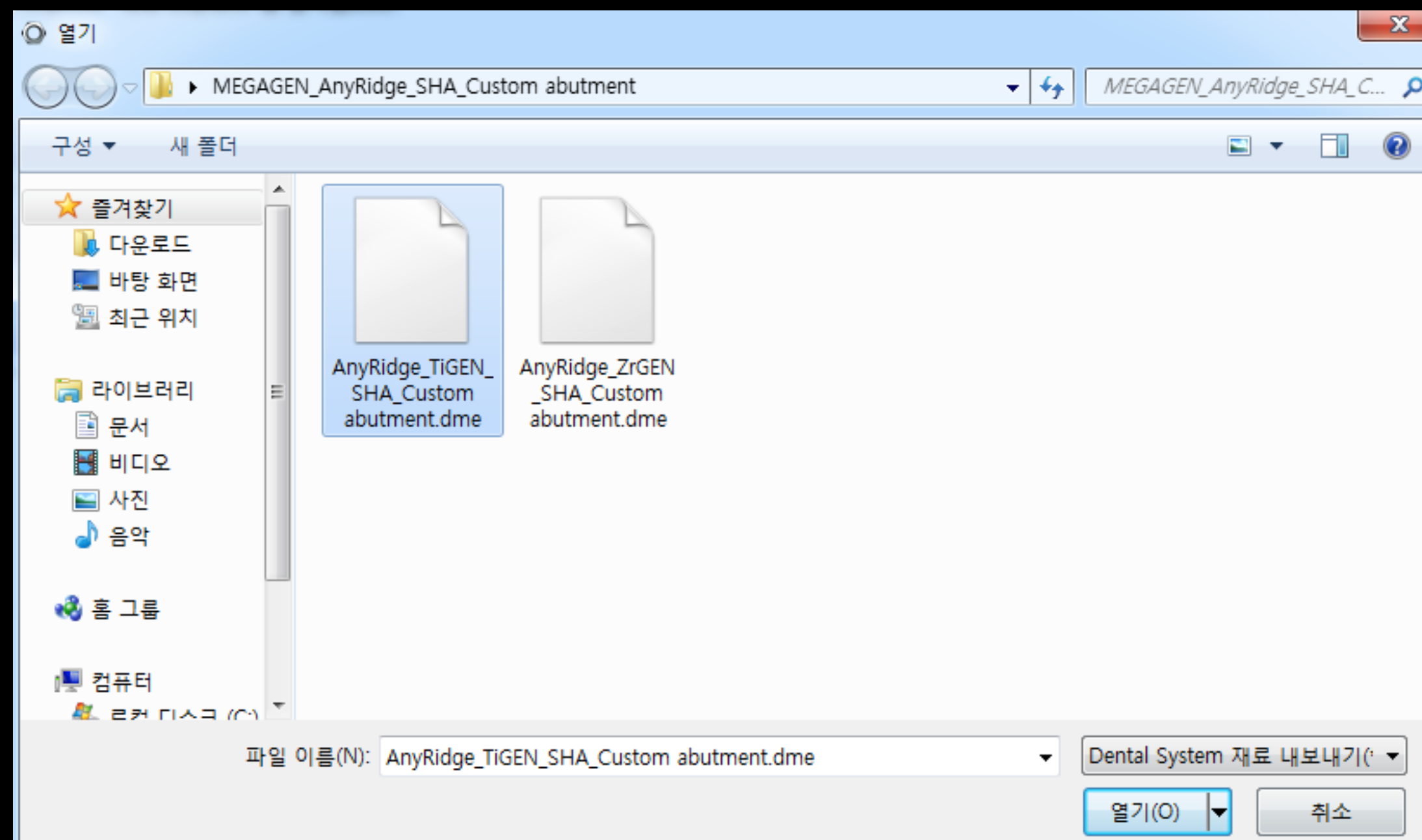
- 1 Extract the downloaded compressed file.
- 2 The library is included in the unpacked folder.

Example) Install AnyRidge Scan Healing Library

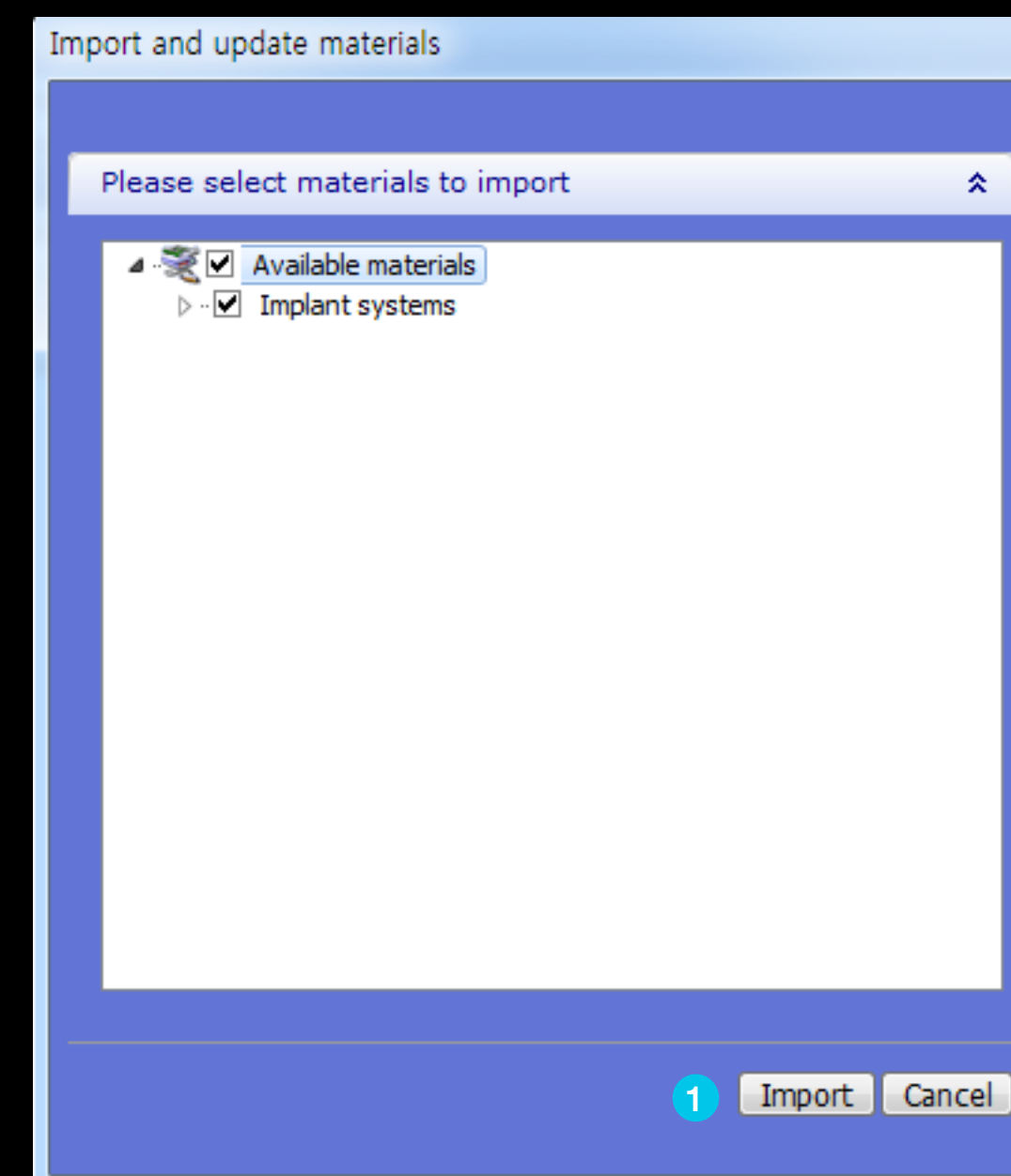


- 1 Run 3Shape Dental System Control Panel.
- 2 Select Import / export to import the library.

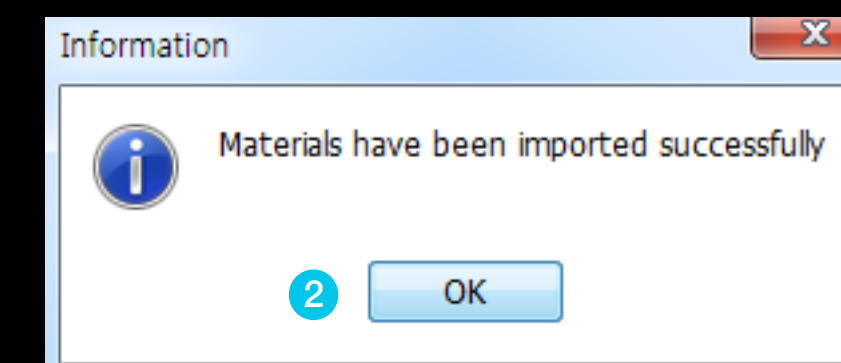
- 1 Select Import Material to import the downloaded library file .dme file.



- 1 ZrGEN is a zirconia abutment (Ti-base)
TiGEN is a Titanium Pre-milled blank.



- 1 If you select Import, the library file is set.
- 2 When the material (library) is properly added, an alarm window appears and is completed.



Implant library and RP library installation is completed.

To apply the library, restart the running 3shape.